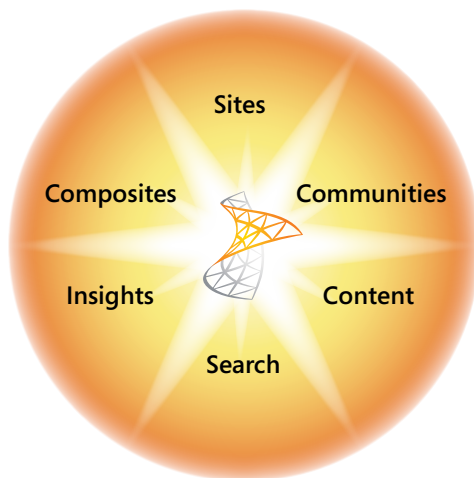




Microsoft® SharePoint® 2010

Partner Learning Guide



SharePoint 2010 is the business collaboration platform for the Enterprise and the Web that enables you to connect and empower people through an integrated set of rich features.

Whether deployed on-premises or as hosted services, SharePoint 2010 helps you cut costs with a unified infrastructure while allowing you to rapidly respond to your business needs.

This guide provides you with information and resources you can use today to get your people and solutions ready for SharePoint 2010. The content in this document addresses both individuals who are new to SharePoint as well as professionals with expertise and years of experience with SharePoint.

Get Ready for SharePoint 2010



New to SharePoint?

Immerse yourself in Microsoft Office SharePoint Server 2007 to be ready for SharePoint 2010! SharePoint 2010 Ignite technical training offering is built for partners that have proficiency on SharePoint 2007, as Developers or IT Professionals. If you have not already skilled up on this version, we have many training offerings listed below to help you. Once you are ready on SharePoint 2007, you will be ready for Ignite!

Exam 70-630:

TS: Microsoft Office SharePoint Server 2007, Configuring

Preparation Courseware:

<http://www.microsoft.com/learning/en/us/exam.aspx?ID=70-630&locale=en-us#tab3>

Exam 70-542:

TS: Microsoft Office SharePoint Server 2007, Application Development

Preparation Courseware:

<http://www.microsoft.com/learning/en/us/exam.aspx?ID=70-542&locale=en-us#tab3>

Other Resources to help you get started:

SharePoint MSDN:

<http://msdn.microsoft.com/sharepoint>

SharePoint TechCenter:

<http://technet.microsoft.com/en-us/office/sharepointserver/default.aspx>

Developer E-Learning for SharePoint Technologies :

<https://www.microsoftlearning.com/catalog/developer.aspx>

IT Professional E-Learning for Microsoft Office :

<https://www.microsoftlearning.com/catalog/itpro.aspx>

All SharePoint E-learning collections and courses:

<http://www.microsoft.com/sharepoint/learning/training.mspix>

SharePoint Deployment and Planning Services:

<http://www.partnersdps.com>

Get your Organization Ready for SharePoint 2010

Start to plan for software and hardware requirements by reading the article:

<http://go.microsoft.com/fwlink/?LinkID=164616>

Stay up to date with the latest SharePoint 2010 news, learning content and guidance on MPN: Microsoft Partner News (MPN):

Readiness Page on MPN:

<http://partner.microsoft.com/sharepoint2010ready>

Portals & Collaboration:

<https://partner.microsoft.com/global/program/competencies/iwsolutions/iwportalsandcollaboration>

Search:

<https://partner.microsoft.com/global/program/competencies/iwsolutions/iwsearchspecialization>

ECM:

<https://partner.microsoft.com/global/program/competencies/iwsolutions/iwecmandforms>

Learn how to prepare for the new Microsoft Partner Network

<https://partner.microsoft.com/nextgeneration>

Existing competencies and specializations will be transitioning to new competencies between July 2009 and May 2010.

Review new requirements on the current specialization pages

Ensure that your organization is aligned by May 2010 to continue into the new competencies

Participate in CSAT Index Surveys

Meet new competency requirements & use the competency tool to learn how you can align

<https://partner.microsoft.com/40115883>

Update your collateral with new brand elements

Build Skills on SharePoint 2010

Get Started with SharePoint 2010

Developers:

This is a free online eLearning course for .NET developers who are just starting out in SharePoint development. It includes 10 modules of video content, hands on labs and code samples.

<http://MSSharePointDeveloper.com>

Tools:

Visual Studio 2010 beta 2

Visual Studio 2010 includes 14 project templates for SharePoint development. It includes a Visual Web Part designer, packaging designers, and integration with Team Foundation Server for Application Lifecycle Management.

<http://www.microsoft.com/visualstudio/en-us/products/2010/default.msp>

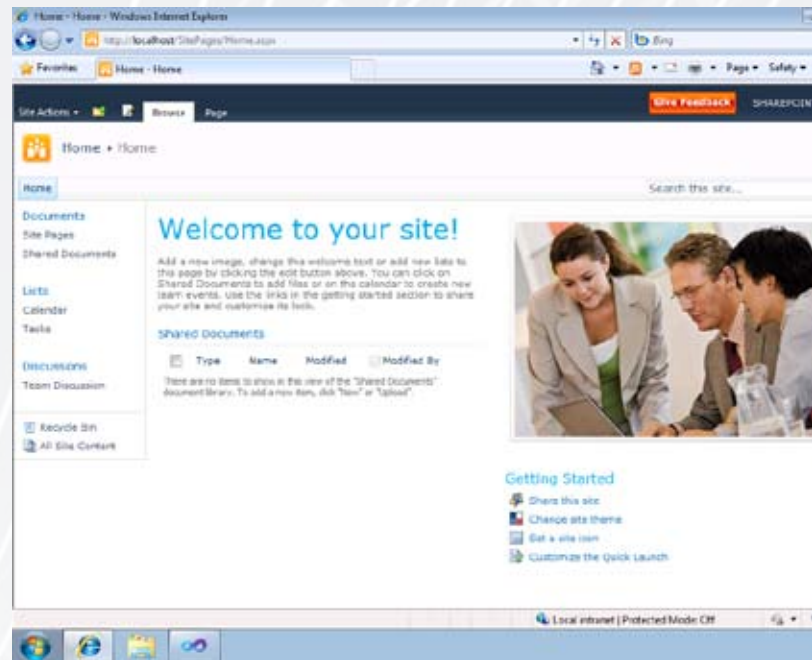
SharePoint Designer 2010 beta

SharePoint Designer is ideal for configuring SharePoint sites, creating list schema, adding design elements, and creating workflow models. It can use workflow activities created and maintained in Visual Studio 2010 and you can export sites created in SharePoint Designer to Visual Studio.

<http://www.microsoft.com/spd>

SharePoint 2010 Developer Learning Snack:

http://www.microsoft.com/learning/_silverlight/learningsnacks/SP10/snack01/Default.html



IT Professionals:

Video Demos :

Learn the new features through video demos

<http://go.microsoft.com/fwlink/?LinkId=164931>

Evaluation Guide:

Read through the Evaluation Guide for SharePoint 2010 IT Pro

<http://go.microsoft.com/fwlink/?LinkID=155342>

Getting Started Videos:

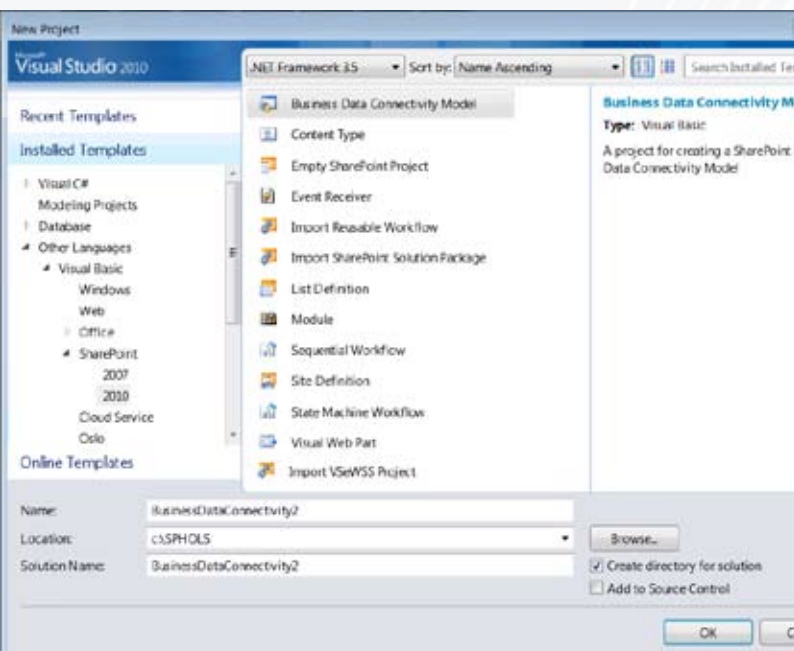
A 10 module online eLearning course is being offered to you for free! The course covers everything you should know as a SharePoint IT Pro if you are new to this world. This content covers basic features and terminology as well as guidance on how to build and maintain a server farm and performance management.

<http://go.microsoft.com/fwlink/?LinkId=164613>

IT Pro Learning Snacks:

http://www.microsoft.com/learning/_silverlight/learningsnacks/SP10/snack02/Default.html

http://www.microsoft.com/learning/_silverlight/learningsnacks/SP10/snack03/Default.html



Get Trained on SharePoint 2010

SharePoint 2010 Ignite

SharePoint 2010 Ignite for IT Professionals & Developers

SharePoint 2010 Ignite is deep technical training for SharePoint 2007 professionals who are looking to upgrade their skills to SharePoint 2010. The training covers two tracks-for IT Professionals and Developers.

Contact your local subsidiaries for Ignite deliveries in your region.

Alliance Partners: contact your learning consultants for how to get engaged

Search for local Ignite training opportunities on SharePoint 2010 on the Partner Learning Center:
<https://training.partner.microsoft.com/learning>

On Line Ignite coming in March 2010

Online Ignite provides SharePoint 2010 training through a self-paced, consumable package including recorded presentations, demos, and hands-on labs. On Line Ignite will be available through the Partner Learning Center in March 2010.

SharePoint 2010 Solution Designer: Coming in early 2010

Targeted for Business analysts and Solution Architects, SharePoint 2010 Solution Designer course will provide reusable 'best in class' patterns for the SharePoint 2010 platform. The training will offer:

Base SharePoint 2010 Modeling & Architectural Patterns (On demand + 1 day)

SharePoint 2010 Workloads (2 days)

Web/Internet

Business Integration/ERP

Collaboration & Social Computing

Enterprise Content Management

Visit **<http://partner.microsoft.com/sharepoint2010ready>** to stay up to date.

New SDPS SharePoint 2010 Upgrade Planning Offering!

SharePoint Deployment Planning Services (SDPS) is designed to help partners provide effective deployments of Microsoft Office SharePoint Server with your customers. SDPS provides a reliable, repeatable process for certified partners to conduct, and be compensated for 1, 3, 5, 10 and 15-day engagements according to the level of their customers' Software Assurance benefits. Partners must be certified and registered to receive payment for engagements. Customers that have deployed SharePoint 2007 will soon be able to use packaged services vouchers to pay for SharePoint 2010 upgrade planning services. This new program will be available at SharePoint 2010 Beta 2. We are excited about the opportunities this new offer will provide to our partner community.

Stay tuned to **www.partnersdps.com** for more details.

Get Trained to sell SharePoint 2010 with BPIO U

Win in a tough economy, build your practice, learn about innovation and access sales training online with BPIO U 2010

Visit: <http://www.sellmsbpi.com/bpiou2010>



BPIO U 2010:
Selling Microsoft Business Productivity Infrastructure
(available late October 2009)

BPIO U 2010:
Selling Microsoft Collaboration
(available late October 2009)

BPIO U 2010:
Selling Microsoft Enterprise Search:
(available early November 2009)

BPIO U 2010:
Selling Microsoft Enterprise Content Management:
(available late November 2009)

Get Certified on SharePoint 2010

Coming in June 2010

With SharePoint 2010, four new certifications and related courseware will be introduced for IT Pros and Developers.

Certification Path for IT Pro

70-667 TS: Microsoft SharePoint 2010, Configuring

Microsoft Official Curriculum: With the training courses of this MCTS certification, IT Professionals can learn configuration skills for SharePoint, including deployment, upgrade, management and operation on a server farm.

70-668 PRO: SharePoint 2010, Administrator

Microsoft Official Curriculum: The training courses of this MCITP certification cover advanced SharePoint 2010 topics like capacity planning, topology designing and performance tuning

Learning Resources

E-Learning:

Course Collection : 10278 - TS: Configuring SharePoint 2010 (16 Hours, Available Early 2010)

Classroom:

Course 10174: TS IT Pro: Configuring and Managing Microsoft SharePoint 2010 (5 days, Available Mid 2010)

Course 10231: Pro ITPro: Designing and Deploying Microsoft SharePoint 2010 (5 days, Available Mid 2010)

Certification Path for Developers:

70-573 TS: Microsoft SharePoint 2010, Application Development

Microsoft Official Curriculum: Developing on SharePoint 2010 Technical Specialist

5 day instructor led training course designed for developers with 6 months or more of .NET development experience. It covers what you need to know to be a productive member of a SharePoint development team using Visual Studio 2010.

70-576 PRO: Designing and Developing Microsoft SharePoint 2010 Applications

Microsoft Official Curriculum: Developing on SharePoint 2010 Professional

5 day instructor led training course designed for development team leads who have already passed the Developing on SharePoint 2010 technical specialist exam. It covers choosing technologies for and scoping a SharePoint project, best practices for SharePoint development, configuring a SharePoint development environment, advanced use of SharePoint developer features and debugging of code in a SharePoint project.

Learning Resources

E-Learning:

Course Collection : 10276 - TS: SharePoint 2010 Development (12 Hours, Available Mid 2010)

Classroom:

Course 10175: TS Dev: Developing and Customizing Applications for Microsoft SharePoint 2010 (5 days, Available Mid 2010)

Course 10232: Pro Dev: Designing Applications for Microsoft SharePoint 2010 (5 days, Available June 2010)

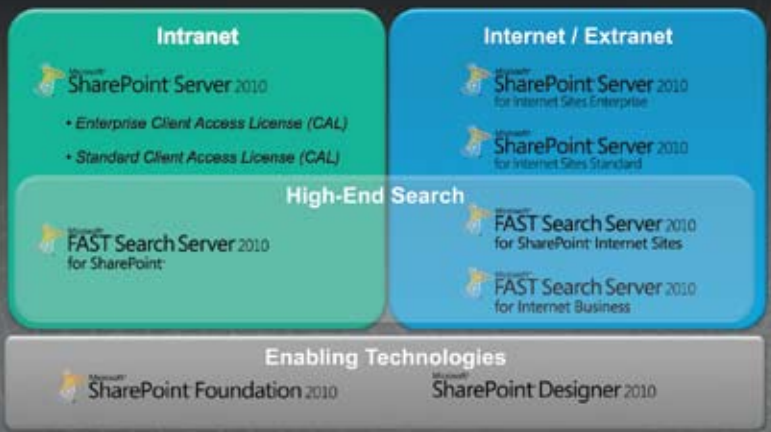


Also, the Microsoft Certified Master certification will be available for SharePoint Server 2010. To achieve Microsoft Certified Master certification, candidates must attend the training program and successfully complete three weekly exams and a qualifying lab exam.

<http://www.microsoft.com/learning/en/us/certification/master.aspx>

The 2010 Lineup

Spanning Intranet, Internet, and Extranet scenarios, with specialty servers for Enterprise Search



In general, the licensing model for SharePoint Server 2010 remains consistent with Office SharePoint Server 2007.

Internal users are typically licensed via a Client Access License (CAL), with the specific license required dependent upon the features used (all running instances of SharePoint Server 2010 require a corresponding server license)

External users are typically licensed via the “for Internet Sites” license

SharePoint Online is licensed via a per-user, per-month subscription

SharePoint Designer continues to be offered as a free download

However, there are a few important changes to note:

The SharePoint Enterprise CAL is packed with a variety of new features spanning Business Intelligence, LOB integration, high-end search, rapid application development, and web analytics.

FAST technology is widely available via Microsoft’s Volume Licensing programs and integrated with SharePoint (licensed with a stand-alone server)

SharePoint Online will release with an offering near parity to the on-premises SharePoint

Windows SharePoint Services 3.0 is being replaced by Microsoft SharePoint Foundation 2010

Resources

SharePoint: How to Buy:
<http://sharepoint.microsoft.com/how-to-buy/Pages/default.aspx>

Licensing Overview:
<http://sharepoint.microsoft.com/how-to-buy/Pages/licensing-overview.aspx>

FAQ:
<http://sharepoint.microsoft.com/how-to-buy/Pages/faq.aspx>

Microsoft License Advisor:
<http://www.microsoft.com/licensing/mla/default.aspx>

Product Licensing Web

SharePoint Server:
<http://www.microsoftvolumelicensing.com/userights/ProductPage.aspx?pid=320>

SharePoint Server for Internet Sites:
<http://www.microsoftvolumelicensing.com/userights/ProductPage.aspx?pid=321>

SharePoint Designer:
<http://www.microsoftvolumelicensing.com/userights/ProductPage.aspx?pid=123>

Resources and Community

SharePoint SDK:

<http://msdn.microsoft.com/SharePoint>

MSDN Forums:

<http://MSSharePointForums.com>

TechNet Forums :

<http://go.microsoft.com/fwlink/?LinkId=165422>

Microsoft Support:

<http://support.microsoft.com/ph/11373>

Stay up to date with the SharePoint team blog:

<http://blogs.msdn.com/SharePoint>

SharePoint TechCenter on TechNet:

<http://go.microsoft.com/fwlink/?LinkId=164932>